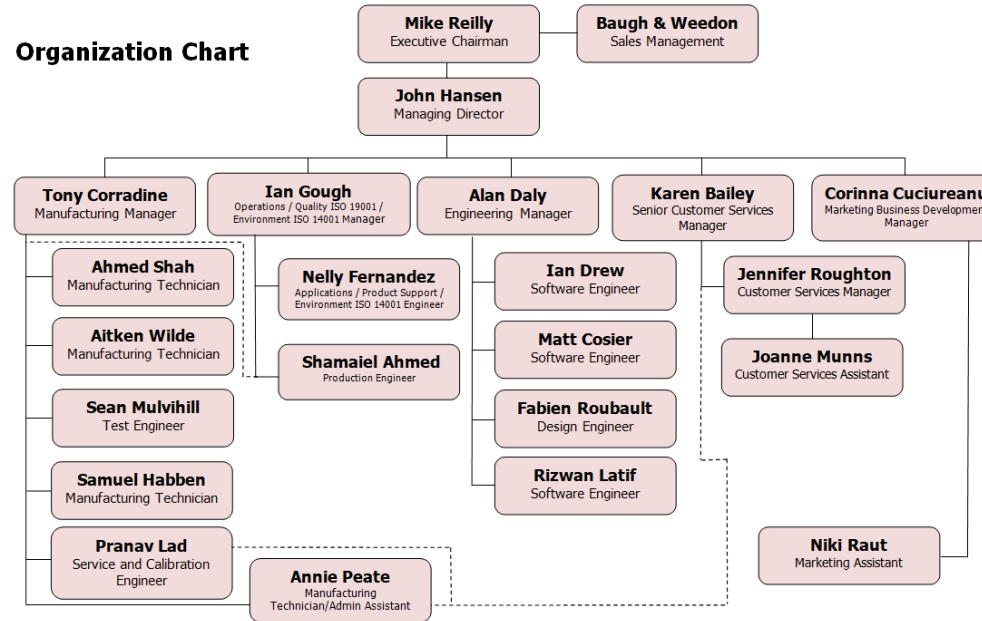


ETher NDE – Environmental Policy Statement

ETher NDE design, assemble and supply Eddy Current test equipment to the Aerospace, Power Generation, Offshore Oil and Gas and Metal Sorting industries. Managing Director John Hansen and Chief Executive Mike Reilly employ a total of 23 staff, consisting of:

Senior Management Team

John Hansen
Mike Reilly
Ian Gough
Tony Corradine
Alan Daly
Karen Baily



Mission Statement

Ether NDE Ltd recognises that it has a responsibility to the environment beyond legal and regulatory requirements. We are committed to reducing our environmental impact and continually improving our environmental performance as an integral part of our business strategy and operating methods. We are also committed to determine, evaluate and fulfil compliance obligations we have with interested parties. We will encourage suppliers and other stakeholders to do the same. We aim by the end of 2021 to have ISO14001:2015 – Environmental Management System certification in place.

Policy Aims

We endeavor to:

- Comply with and exceed all relevant regulatory requirements.
- Continually improve our environmental performance/impact.
- Actively promote recycling.
- Comply with all compliance obligations.

Paper

- We will minimize the use of paper in the office where possible.
- We will reduce and reuse packaging as much as possible.

- We will reuse and recycle all paper where possible.

Energy and Water

- We will seek to reduce the amount of energy used as much as possible.
- Lights and electrical equipment will be switched off when not in use.
- Heating will be adjusted with energy consumption in mind.

Office Supplies

- We will evaluate if renting/sharing is an option before purchasing equipment.
- We will reuse and recycle everything we are able to.

Transportation

- We will reduce the need to travel, restricting to necessity trips only.
- We will promote the use of travel alternatives such as e-mail or video/phone conferencing.

Maintenance and Cleaning

- We will comply with all relevant regulatory requirements.

Monitoring and Improvement

- We will only use licensed and appropriate organisations to dispose of waste.

Culture


- We will involve staff in the implementation of this policy, for greater commitment and improved performance.
- We will update this policy at least annually in consultation with staff and other stakeholders where necessary.
- We will provide staff with relevant environmental training where required by using an outside body.
- We will use local labour and materials where available to reduce CO₂ and help the community.

Overall and final responsibility for environmental safety is that of:

John Hansen – Managing Director

Day-to-day responsibility for ensuring this policy is put into practice is delegated to:

Management Team (as shown on page one)

Signed: (Employer)		Date:	13/01/2021	
Subject to review, monitoring and revision by:	John Hansen	Every:	12	months or sooner if work activity changes