

ETi-200

**ADVANCED EDDY CURRENT FLAW DETECTOR
MULTI-FREQUENCY & MULTI-CHANNEL**



- 7" high-resolution colour display
- Smallest, multi-frequency, multi-channel portable EC unit on the market
- USB "on-the-go" (USB device compatible), Ethernet and SD Card capability
- User-friendly interface with intuitive 'Smart Wheel'

The ETi-200 offers a choice of single or dual-probe operation. In dual-probe mode, the ETi-200 will multiplex four Channels per Probe whereas in single probe mode up to eight channels are available. Within the Channel set-up, the Operator can programme not only Frequency, but many other key functions. The flexibility of the ETi-200 is unprecedented and unmatched for a portable unit with advanced features and functions.

The ETi-200 is built with a strong cast aluminium chassis. The aluminium chassis is over-laid with protective rubber over-moulding on all corners and other vulnerable areas.

We are confident that the cast aluminium enclosure and protective rubber over-moulding make the ETi-200 the most durable and robust portable Eddy Current Flaw Detector yet.

ADVANTAGES

- **Rugged instrument with cast aluminium frame, rubber over-moulding and ergonomic design.**
- **Great battery life (5.5 hours) with “quick swap” batteries.**
- **Removable Eddy Current Cartridge allows easy future upgrades and enhancements.**
- **Excellent analogue performance.**
- **Advanced Software including signal mixing functions, measurement cursors, configurable alarms and auto-load.**

KEY BENEFITS

POWERFUL YET SMALL

Weighing just 2.8kg (6.2lbs) with a compact footprint, the ETi-200 offers the user more advanced features than any equivalent unit.

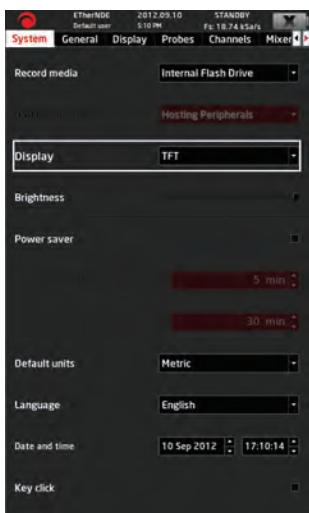
Sympathetically designed with end users in mind, the ETi-200 includes an adjustable hand-strap, harness attachment points and meets the IP54 standard making it splash and dust proof.

LARGE HIGH DEFINITION DISPLAY

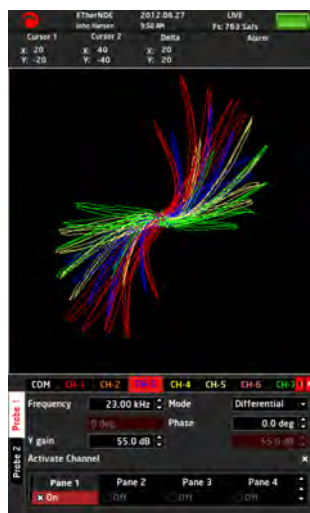
The ETi-200 has an impressive 7” diagonal 800 x 480 pixel colour TFT display.

Colours on the display are user-programmable and menus incorporate feature friendly icons.

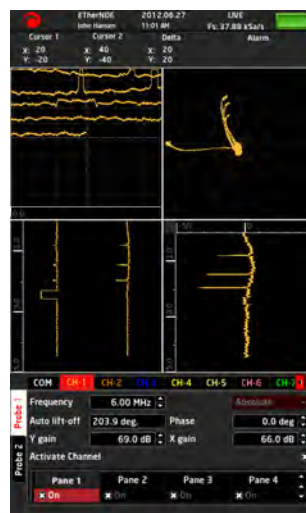
The display can be presented with one, two or four panes. Each pane can in turn have any channel displayed on it in different colours.



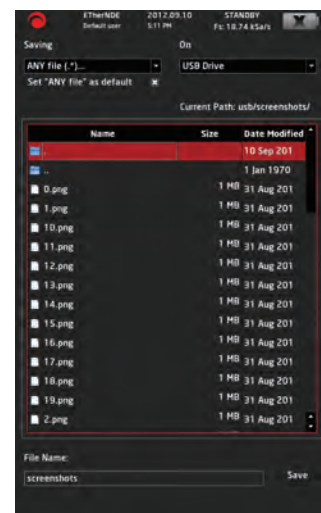
General Settings Screen.



Single Channel, Multi-frequency with ID Probe.



Single Frequency, Waterfall, Spot, Time-base and Chart Display.



Advanced File Management Screen.

STATE-OF-THE-ART COMMUNICATIONS & DATA STORAGE

The ETi allows USB peripherals (memory stick, mouse, keyboard) to be connected; i.e. USB “on-the-go”.

The ETi-200 features an Ethernet port for software upgrades and future functions and a full-size 32Gb SD Card slot.

At a 25k sample rate, the ETi-200 can store as much as 48 hours of continuous live recordings.

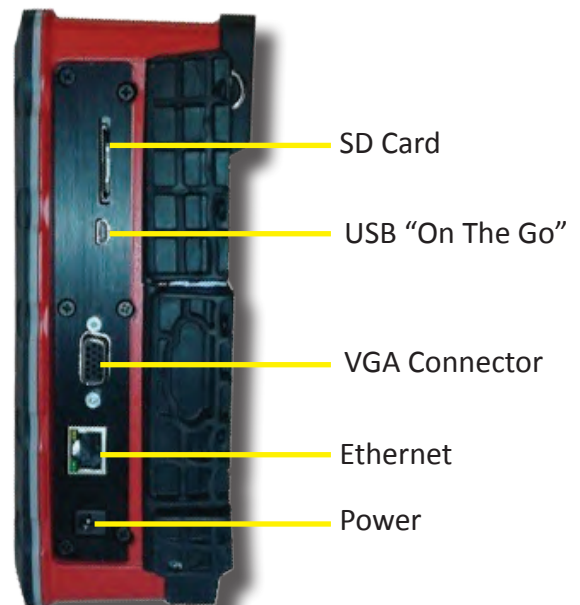
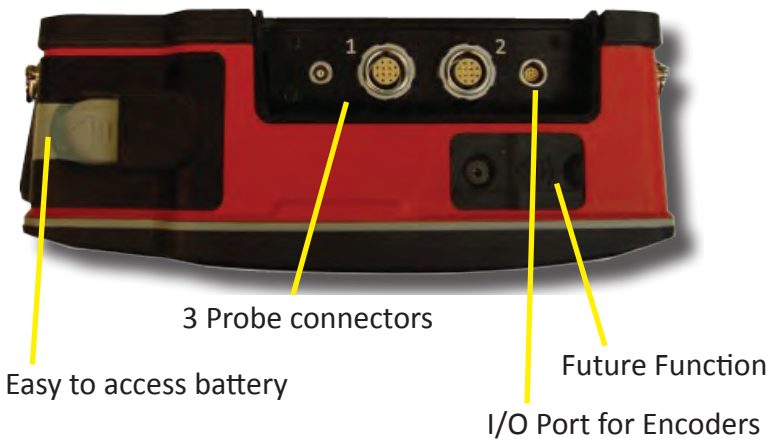
USER FRIENDLY INTERFACE

The ETi-200 offers a choice of navigation through a rapid ‘Smart Wheel’ control wheel or a four-way cursor function.

Across all menus active functions are highlighted. Embedded HELP text is incorporated throughout the ETi-200 menus.

The ETi-200 also incorporates many direct keys for the most common operations and functions.

A CLOSER LOOK AT THE ETi-200



SPECIFICATION

Probe	Modes	Lemo 00 for absolute probes and a 12 way Lemo connection for Reflection, Bridge and Rotary and Second Lemo 12 way for Reflection and Bridge Probes. Absolute and Bridge modes selectable at 50 or 100 ohm.
	Test	Up to 8 channels with 12 user definable mixers
	Frequency	10 Hz-15 MHz in 0.01 increments per Hz, kHz or MHz range
Signal	Drive	0.10 - 20.00v pk-pk in 0.01v increments
	Phase	0°-359.9° in 0.1° increments
	Gain	Gain: -12.0 - +100 dB in 0.1 steps
	X /Y Axis Spread	Any valid gain value on either channel. With lockable relative values.
	Digitising Rate	36 kHz max above 300kHz drive frequency
	Filter	Band Pass, High Pass and Low Pass
	Load	Automatic load selection for absolute probes with manual override. 8 values 1.3 uH to 470 uH
Display	Screen	7" 480 by 800 Pixel Colour TFT
	Mode	Impedance (phase) plane display with strip chart or time base 1, 2 or 4 panes
	Grid	Options of; None, 20% (5 by 5), 10% (10 by 10) and Polar
	Spot Position	+/- 50 % in 1% increments
	Persistence	Permanent and 0.01 -100.00 seconds in 0.1s increments
Alarm	External	Standard 15 way d-type for external monitor, head up display or projector.
	Type	1 per channel selectable; Box or Sector
	Setting	In increments of 1 %
	Quantity	8
Data Storage	Action	Audio and / or signal freeze
	Settings	Diverse options to internal ram drive, removable SD card (up to 32GB) or USB memory stick (up to 32GB).
	Recording	Digitised data may be saved to internal memory (up to 32GB), external USB device or SD Card (up to 32GB). 1 GB of Internal Flash Memory. At a 25kHz processing rate, 1 minute of single channel data uses 11MB.
Data Output	Interface	USB (on the go), Ethernet, SD Card, VGA.
User Interface	Front Panel	Rotary control, cursor control, 18 push button keys. 4 Status LEDs
	Software	Tabs, Soft Keys, Scrollable values, Direct data entry, will operate with USB Keyboard
Enclosure	Dimensions	20.0cm (7.9") High x 22.5cm (9.0") Wide x 7.5cm (3.0") Thick
	Weight	2.8 Kg (6.2 lbs)
	Environmental	IP54
	Temperature	Maximum Operating: 0 to 35°C Recommended Storage: -20 to 70°C
Power	Internal Battery	Replaceable Li-Ion 14.4 v 5.5 hours max life
	External AC	Power/charger 100-240 v 1.2A ac 50-60 Hz 90 watts

STANDARD ETi-200 KIT



- Instrument - ETi-200-Two Channel, Eddy Current Flaw Detector, Multi Frequency 10Hz-15MHz, Gain 0-100db, Lemo 12-Way, Manual on USB Stick and Carry Strap.
- Hard Transit Case.
- AC Power Adapter / Charger.
- LEAD, MICRO-B USB OTG (On the Go) Cable, 10cm.
- ETi Quick Reference Card.
- Mains Lead (Per Country of Destination).
- Lead, Lemo 12-Way - Lemo 4-Way, 1.5m (Reflection).
- Lead, Lemo 12-Way - Lemo 4-Way, 1.5m (Bridge).
- Lead, Lemo 00 to Microdot, 1.5m (Vantage).
- Lead, Lemo 00 to BNC, 1.5m (Vantage)



Document number 5027: Issue 1